

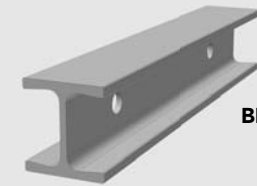
# CLICKSYS™

## Part List

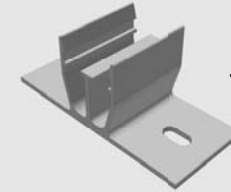
© 2009 by Unirac, Inc. All rights reserved.  
Pub 090825-1pl, August 2009

### CLICKSYS™, hardware and accessories - Clear Anodized (Unless otherwise specified)

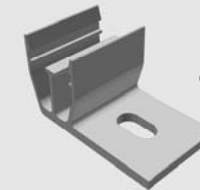
Part no.	Description	Quantity	Ship wt (lbs.)		
<b>Beams</b>					
010144M-0050	Beam, 100 Series 144" - Mill Finish	50	210		
<b>Attachments</b>					
004000M-0048	Two Flange Connection w/3" Screws	48	8		
004001M-0048	Two Flange Connection w/3" Screws & Buytl,	48	11		
004010M-0048	One Flange Connection w/Lag Bolt	48	9		
005010C-0024	Tile Hook Top Mount w/Lag Bolt & 1Flange Connection	24	21		
005020S-0018	QuickMount AL Flashing 9.5"x12.5" w/1Flange Connection	18	13		
005003C-0024	3" Standoff 2-Piece Alum w/One Flange Connection	24	20		
005004C-0024	4" Standoff 2-Piece Alum w/One Flange Connection	24	20		
005006C-0024	6" Standoff 2-Piece Alum w/One Flange Connection	24	20		
005007C-0024	7" Standoff 2-Piece Alum w/One Flange Connection	24	20		
<b>Splices</b>					
003020C-0025	Splice Kit	25	2		
003021C-0025	Splice kit w/grounding	25	2		
<b>Top Mounting Hardware</b>					
<i>End Clamp:</i>		<b>Module thickness</b>			
		<i>Inches</i>	<i>mm</i>		
002001C-0048	EndClamp A	(0.94 - 1.02)	(24 - 26)	48	7
002002C-0048	EndClamp B	(1.18 - 1.26)	(30 - 32)	48	7
002003C-0048	EndClamp C	(1.34 - 1.42)	(34 - 36)	48	7
002004C-0048	EndClamp D	(1.50 - 1.57)	(38 - 40)	48	7
002005C-0048	EndClamp E	(1.97 - 2.05)	(50 - 52)	48	7
002006C-0048	EndClamp F	(1.77 - 1.85)	(45 - 47)	48	7
002009C-0048	EndClamp J	(1.61 - 1.69)	(41 - 43)	48	7
002010C-0048	EndClamp K	(1.54 - 1.61)	(39 - 41)	48	7
<i>Mid Clamp:</i>					
002026C-0048	MidClamp A	(0.94 - 1.02)	(24 - 26)	48	7
002027C-0048	MidClamp B-C	(1.18 - 1.42)	(30 - 36)	48	7
002028C-0048	MidClamp D,K	(1.50 - 1.61)	(38 - 41)	48	7
002030C-0048	MidClamp E,F,J	(1.61 - 2.05)	(41 - 52)	48	7
<b>Accessories</b>					
008000S-0050	UGC-2 CLICKSYS grounding clip	50	2		
008010M-0024	Enphase Mounting Kit @ 24	24	7		



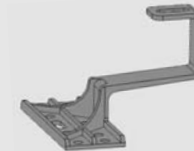
BEAM (144")



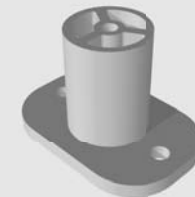
TWO FLANGE CONNECTION



ONE FLANGE CONNECTION



CREOTECC  
TILE HOOK (TOP)



STANDOFF  
(2-piece Aluminum)



BEAM SPLICE



MID/END CLAMP

# CLICKSYS™

## Part List

### CLICKSYS™, hardware and accessories -Dark Anodized

Part no.	Description	Quantity	Ship wt (lbs.)		
<b>Beams</b>					
010144D-0050	Beam, 100 Series 144", Dark	50	210		
<b>Attachments</b>					
004000D-0048	Two Flange Connection w/3" Screws, Dark	48	8		
004001D-0048	Two Flange Connection w/3" Screws & Buytl, Dark	48	11		
004010D-0048	One Flange, Connection w/Lag Bolt, Dark	48	9		
005020D-0018	QuickMount Flashing 9.5"x12.5" w/1Flange Connection, Dark	18	13		
005003D-0024	3" Standoff, 2-Piece w/One Flange Connection Dark	24	20		
005004D-0024	4" Standoff, 2-Piece w/One Flange Connection Dark	24	20		
005006D-0024	6" Standoff, 2-Piece w/One Flange Connection Dark	24	20		
005007D-0024	7" Standoff, 2-Piece w/One Flange Connection Dark	24	20		
<b>Splices</b>					
003020D-0025	Splice Kit Dark	25	2		
003021D-0025	Splice kit w/grounding Dark	25	2		
<b>Top Mounting Hardware</b>					
<i>End Clamp:</i>					
		<b>Module thickness</b>			
		<i>Inches</i>	<i>mm</i>		
002003D-0048	EndClamp C, Dark	(1.34 - 1.42)	(34 - 36)	48	7
002004D-0048	EndClamp D, Dark	(1.50 - 1.57)	(38 - 40)	48	7
002005D-0048	EndClamp E, Dark	(1.97 - 2.05)	(50 - 52)	48	7
002006D-0048	EndClamp F, Dark	(1.77 - 1.85)	(45 - 47)	48	7
002010D-0048	EndClamp K, Dark	(1.54 - 1.61)	(39 - 41)	48	7
<i>Mid Clamp:</i>					
002027D-0048	MidClamp C, Dark	(1.18 - 1.42)	(30 - 36)	48	7
002028D-0048	MidClamp D,K, Dark	(1.50 - 1.61)	(38 - 41)	48	7
002030D-0048	MidClamp E,F Dark	(1.61 - 2.05)	(41 - 52)	48	7



1411 Broadway Boulevard NE  
Albuquerque NM 87102-1545 USA